

产品规格书

PRODUCT SPECIFICATION

PRODUCT—产品: 12VDC高空防水红外感应器MODEL NO—型号: HP03VRHDATE——日期: 2021-08-20PREPARED—编制: 夏勇CHECKED—审核: 郑登新APPROVED—批准: 周蒙

客户确认

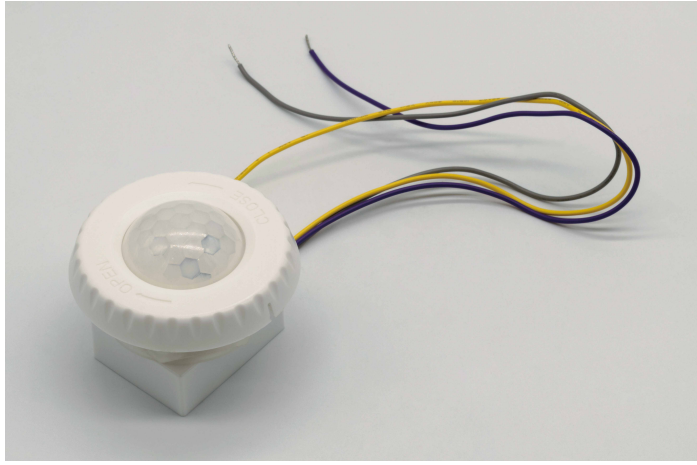
CUSTOMER RECEIVED

CUSTOMER—客户: _____

CHECKED—审核: _____

APPROVED—批准: _____

DATE——日期: _____



12VDC高空防水红外感应器 IP66 12VDC PIR Highbay Sensor

HP03VRH



- 12VDC IP66防水 •红外感应, 最高12M安装高度 •三段式调光;
光感检测功能 •遥控设置
- 12VDC Input, waterproof IP66 •PIR Sensor for max 12M Height
- Bi-level Dimmable, Daylight Threshold •Remote Control

On/Off Control
开/关功能

Detection Area
探测范围设置

Daylight Sensor
日光阈值设置

Stand-by period
守候时间设置

Stand-by dimming level
守候亮度设置

Hold Time
延时时间设置

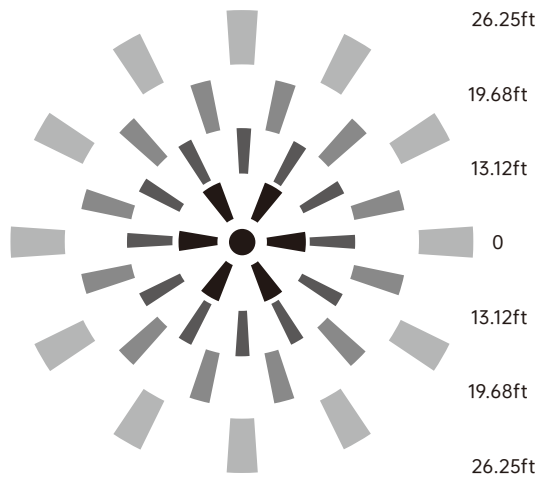
Max.12M Highbay
12m高安装

Remote Control
遥控设置

3 years
3年质保

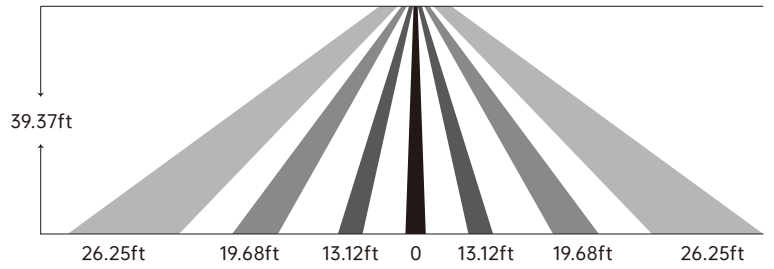
Technical Data 参数规格

工作电压 Operating Voltage 12-24VDC	灵敏度设置 Sensitivity setting 100%/75%/50%/25%	红外波长 PIR Wave Length 5-14um
连接方式 Connection 黄: VCC 灰: GND 紫: DIM+ Yellow:VCC Gray:GND Purple:DIM+	延时时间设置 Hold Time 5s/30s/1min/3min/5min/10min/20min/30min	输入信号峰值 Peak Output Signal ≥3500mV
工作电流 Operating Current <15mA	日光阈值设置 Daylight Sensor 2Lux/10Lux/30Lux/50Lux/80Lux/120Lux/Disable	探测角度 Detection Angle 菲涅尔透镜 <120° Fresnel Lens
输出控制方式 Control Method ON/OFF,0-10调光	守候时间设置 Stand-by period 0s/10s/30s/1min/5min/10min/30min/60min/+∞	功能设置方式 Remote HD05R
安装高度 Mounting Height ≤12m/39.4ft 吸顶安装 ≤12m/39.37ft Ceiling Mounted	守候亮度设置 Stand-by dimming level 10%/20%/30%/50%	工作温度 Operating Temperature -40°C~+70°C
探测范围 Detection Range 半径:4-8m/13.12-26.25ft Radius.4-8m/13.12-26.25ft	调光范围 Dimming Range 长亮模式(10%-100%); 感应模式(60%-100%) 10%-100% for ON/OFF Mode, 60%-100% for sensor mode	IP防护等级 IP Rating 透镜部分IP66,电源部分IP20 Lens part IP66, Mainbody IP20

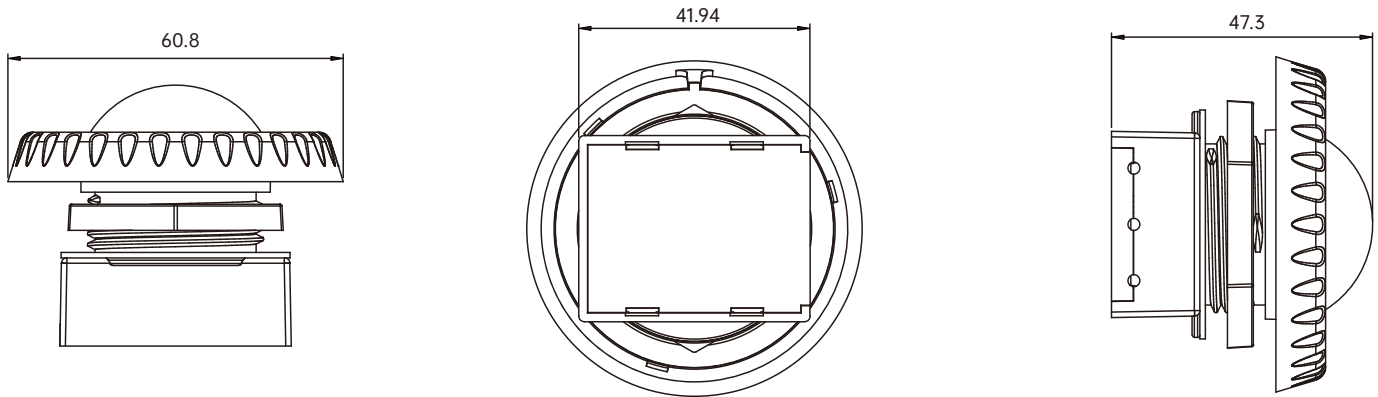


安装高度 Mounting Height
 ≤12m/39.4ft 吸顶安装
 ≤12m/39.37ft Ceiling Mounted

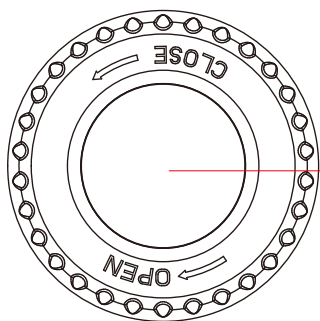
探测范围 Detection Range
 半径:4-8m/13.12-26.25ft
 Radius:4-8m/13.12-26.25ft



Dimensions 尺寸图 Unit: mm

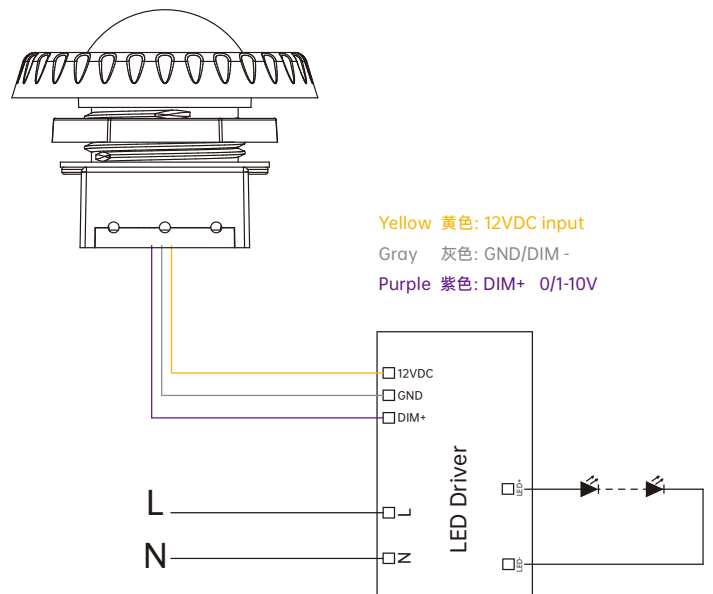


Mechanical structure 结构图

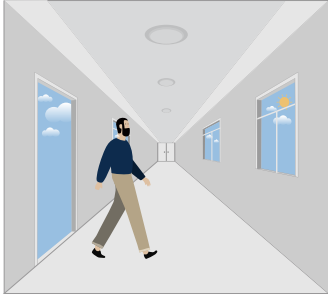


菲涅尔透镜
 Fresnel Lens

Wiring Diagram 接线图

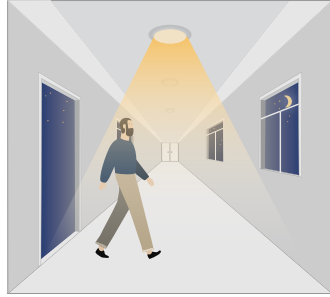


1. Automatically ON/OFF function 自动开/关功能



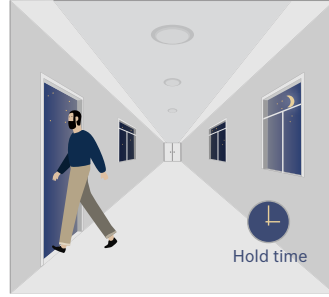
环境光亮度充足时，即使检测到运动，感应器也不亮灯。

With sufficient daylight, even when motion detected, light remains OFF.



当环境光亮度不足时，检测到运动后，感应器自动亮灯。

With insufficient daylight, the sensor turns light ON when motion gets detected.



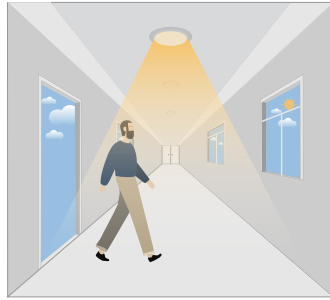
感应器检测不到运动后，自动进入延时时间，延时时间后自动关灯。

The sensor turns OFF light automatically after the holdtime when there's no motion detected.

2. Daylight Disable 光感不受控功能

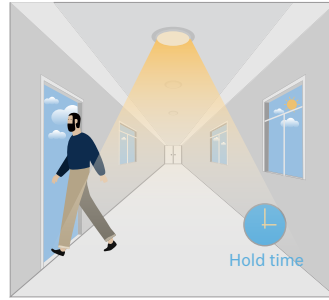
当自然光阈值设定为disable时，即完全不考虑自然光亮度，感应器检测到运动即亮灯。

When daylight threshold is preset as "disable", the sensor turns light ON when motion gets detected, and OFF after hold-time.



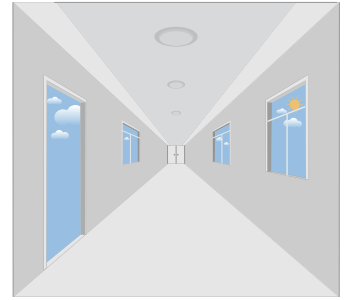
检测到运动后，感应器自动亮灯。

The sensor turns light ON when motion gets detected.



感应器检测不到运动后，自动进入延时时间。

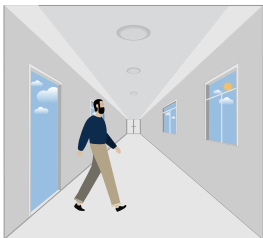
The sensor keeps light ON for holdtime period after motion leaves.



延时时间后自动关灯。

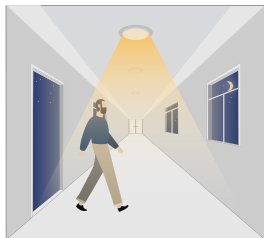
The sensor turns OFF light automatically after the holdtime.

3. Corridor Function, Bi-level Dimmable 三段式调光功能



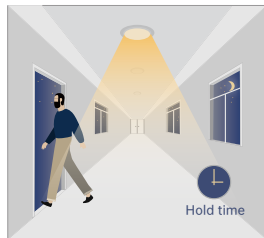
环境光亮度充足时，即使检测到运动，感应器也不亮灯。

With sufficient daylight, the sensor keeps light OFF even motion gets detected.



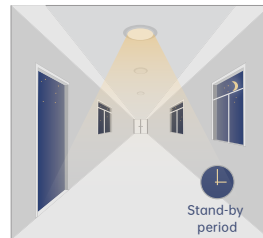
当环境光亮度不足时，检测到运动后，感应器自动亮灯。

With insufficient daylight, the sensor turns light ON when motion gets detected.



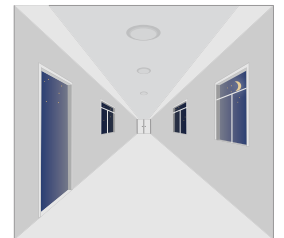
感应器检测不到运动后，自动进入延时时间；延时时间段内灯亮100%。

After there's no motion detected, the sensor keeps light ON 100% for holdtime.



延时时间后，感应器自动进入守候时间，保持守候亮度。

After holdtime, sensor dims light to standby dimming level for standby period.



守候时间结束后，感应器自动灭灯。

The sensor turns OFF light automatically after the standby period when there's no motion detected.



Attention 注意事项

1. Please read the instructions carefully before using this product and keep it well for all users to read at any time.
2. The sensor should be installed by qualified electrician and ensure power is off before the installation.
3. We reserve the right to modify any incorrect text, image and necessary technical parameters.
4. Any unauthorized modification is forbidden, otherwise all guarantees will be immediately invalid.

- 1、使用本产品前请仔细阅读使用说明，并妥善保管以便所有使用者随时参阅。
- 2、感应器应由专业的电工安装，并确保在安装前，切断电源。
- 3、我们将保留对任何错误文字或图像以及必要的技术参数做出修改的权利。
- 4、未经授权不得擅自修改感应器，否则一切签约保证将立即失效。

Installation precautions 安装注意事项

1. Turn the power off at the circuit breaker before installing the sensor.
 2. Do not allow bare wires to show.
 3. Assemble any necessary mounting accessories.
 4. Have the sensor's lens lower than edge of the fixture and keep the sensor away from heating part.
- 1、确保安装前先断电。
 - 2、安装后不得有裸线；确保接线正确安装。
 - 3、确保感应器的所有配件全部安装好。
 - 4、确保透镜部分外露安装，不被遮挡。
 - 5、安装后要使感应透镜部分超过灯具平面，且不靠近灯具发热位置；灯具或电源产生的热同样会影响红外感应器正常工作。

Application Environment 应用环境

1. Do not mount it outdoor, in case the outdoor temperature disturbs it.
 2. Do not have it at places with suddenly changed temperature or airflow.
 3. Do not have shelves between sensor to the presence area.
- 1.不宜安装在室外，避免受环境温度的影响误触发。
 - 2.不宜安装在温度或气流变化敏感的位置，避免误触发。
 - 3.从感应头到探测地面的纵向距离间不宜有隔板、货架等隔离物体。

SCREEN DISPLAY,
MEMORY & APPLY FUNCTION,
OPTIONAL SCENES

独家LCD屏显
支持设置记忆与一键发送
配合调光功能感应器

Briefing of Button Functions 按钮功能简介

Model: HD05R



Buttons 遥控按键	Function 按键功能	Performance 按键介绍
	ON/OFF 开/关按键功能	Turn ON or OFF the sensor. 1. 开 / 关常亮灭模式; 2. 关闭微波感应模式
	MW/PIR	Daylight learning button, press it and light flickers 3 times and light on, it means ambient brightness learnt. 这个键是光感学习键。遥控器切换到MW/PIR互闪且灯具灭3秒后再亮起表示学习光感值成功
	Reset 复位功能	Press it to start detection programming; before pressing any other buttons, the screen shows default programming (Detection Area 100%, Holdtime 5S, Daylight Disable, Standby Dimming 10%, Standby Period 0S) 切换功能模式 感应模式默认值为探测范围 100%, 延时 5S, 守候 10% 亮度, 守候时间 0s, 光感不受控。
	Start 开始设置	Press it before you try to memorize program into the remote; After pressing it, S on the screen will blink and keeping blinking while making the program. 按下 Start 键, 显示屏左下角有 S 字母闪烁即可开始通过下面功能设置, 选定自己想要的功能参数
	Memory 存储/保存	Press it after programming, the blinking S will become a solid M, that means the program has been well memorized. 设置好自定义功能参数后, 需按下 Memory 键进行存储, 才能成功存储自定义功能参数值于遥控器内;
	Apply 一键发送	Press it to deliver the preset program to the specific sensors; every press will make the whole screen blink gently. 其它的感应器要使用已存储好的自定义场景设置时, 在红外接收范围
	Detection area 探测范围设置	Also known as "sensitivity", 100% means the highest sensitivity and longest distance. Press it, specific icon on the screen will blink and press the + - buttons to adjust. 功能模式下按下此键显示屏上相应灵敏度栏图标闪烁, 此时可通过中间的加减键选择灵敏度参数。
	Hold time 延迟时间设置	The period that light will stay illuminated 100% after no motion's detected; Press it, specific icon on the screen will blink and press the + - buttons to adjust. 功能模式下按下此键显示屏上相应延时栏图标闪烁, 此时可通过中间的加减键选择延时时间参数。
	Daylight Threshold 日光阈值设置	The preset lux level to compare with ambient brightness when motion gets detected; Press it, specific icon on the screen will blink and press the + - buttons to adjust. 功能模式下按下此键显示屏上相应光感阈值栏图标闪烁, 此时可通过中间的加减键选择光感阈值参数。
	Stand-by period 守候时间设置	The period after holdtime, during which the light keeps standby dimming level; Press it, specific icon on the screen will blink and press the + - buttons to adjust. 功能模式下按下此键显示屏上相应守候时间栏图标闪烁, 此时可通过中间的加减键选择守候时间参数。
	Stand-by dimming level 守候亮度设置	After holdtime, the light will dim from 100% to optional standby dimming levels; Press it, specific icon on the screen will blink and press the + - buttons to adjust. 与守候时间结合使用; 功能模式下按下此键显示屏上相应守候亮度栏图标闪烁, 此时可通过中
	UP 向上翻/或递加	The main functional buttons to adjust the factors to wanted level. 这两个按键是选择键, 按功能按键后, 再按 +/- 键选择参数。
	DOWN 向下翻/或递减	
	POWER 输出功率设置	Supports to manually change dimming output in detection mode; Press it, specific icon on the screen will blink and press the + - buttons to adjust. 功能模式下按下此键显示屏左中位置出现 PW 闪烁, 此时可通过中间加减键设置灯的输出功率
	Test mode 测试模式键	Supports to check if the sensor works correctly with a short 2S holdtime; Press it and the holdtime will change to 2S, and it can't be memorized. 按下此键为感应模式测试模式键, 断电后不此参数设定。 灵敏度 100%, 延时 2S, 守候亮度 10%, 守候时间 0S, 光感不受控

How to Use HD05R

1. SENSOR PROGRAMMING

1. ON/OFF button to turn on the light
2. SCENE button to start programming
3. Choose functional button of detection area, see icon blinking on the LCD screen display then use + - buttons to change
4. Same programming with all the other functional buttons of holdtime ,standby dimming level, standby period and daylight threshold
5. Done and leave the remote.

*Icon keeps blinking on the screen for 5S that means the program will then be kept after 5S.

*Each press will make sensor dim down light then back to 100%, it means remote signal has been well received.

2. MEMORY AND APPLY

@the 1st sensor

1. ON/OFF button to turn on the light
2. SCENE button to start programming
3. START button
4. Choose functional button of detection area, see icon blinking on the LCD screen display then use + - buttons to change
5. Same programming with all the other functional buttons of holdtime ,standby dimming level, standby period and daylight threshold

6. MEMORY button

7. APPLY button

@the other sensors

1. ON/OFF button to turn on the light
2. SCENE button to start programming
3. APPLY button

3. MANULLY DIMMING

ON/OFF mode

1. ON/OFF button to turn on the light
2. Press +- button to dim light directly, it dims from 10% to 100%

DIMMING mode

1. ON/OFF button to turn on the light
2. SCENE button to start programming
3. POWER button
4. +- buttons to dim light, but it only dims from 60% to 100%; 50% is one of the standby dimming level options

* Number on LCD screen display may keep changing 10%-100%.

HD05R 遥控使用步骤

1、微波感应设置

- 1.首先按 Scene 键复位, 切换到感应模式;
- 2.开始对探测范围 [A] / 延时时间 [B] / 日光感应 [C] / 守候亮度 [D] / 守候时间 [E] 设置参数, 按 [▲] / [▼] 键选择参数, 设置时显示屏上对应的图标会闪烁, 闪烁时间长是 5s, 5s 后自动保存设置值, 同时, 每遥控一次灯会眨眼睛模式一次, 表示遥控信号接收成功并生效。
- 3.遥控设置完成。

2、自定义存储设置和应用 Start / Memory / Apply

- 1.首先按 Scene 键复位, 切换到感应模式;
- 2.开始对探测范围 [A] / 延时时间 [B] / 日光感应 [C] / 守候亮度 [D] / 守候时间 [E] 设置参数, 选择功能键后以 [▲] / [▼] 键选择参数, 设置时显示屏上对应的图标会闪烁, 闪烁时间长是 5s, 5s 后就会自动退出该模式。
- 3.设置完成后, 按 Memory 键保存
- 4.其它的感应器要应用已存储好的自定义场景模式时, 按 Apply 键即可应用已存储好的自定义场景模式, 同时灯也会眨眼睛模式, 表示遥控信号接收成功并生效。

3、灯亮度设置 (即输出功率设置) :

- 1.灯亮度设置时有两种情况, 感应模式状态和常亮模式状态时。
- 2.在常亮模式状态下, 按遥控 [▲] / [▼] 键设置, 调节范围 10% -100%。
- 3.感应模式下状态下:
 - *要先按遥控中的 Scene 键, 再按 POWER 键, 再按 [▲] / [▼] 键设置灯的亮度, 调节范围 60% -100%;
 - *注意的是遥控上的数值可以调 10% -100%, 实际灯亮度调至 60%后亮度不再变暗。